

# THE N A I O P U L S E

MARCH 2026 ISSUE

A PUBLICATION OF THE NATIONAL AI OFFICE, MALAYSIA



## About the N A I O Pulse

Welcome to the N A I O Pulse, a living stream of insights from Malaysia's National AI Office (NAIO). Each release captures the heartbeat of artificial-intelligence policy and innovation. Whether you're a policymaker, industry leader, researcher, or simply curious, the N A I O Pulse is your adaptable guide to navigating—and shaping—the next frontier of trustworthy, transformative AI.

## INSIGHTS

### NATIONAL AI TREND - DRIVING AI INNOVATION

Global AI is driven by sovereignty and innovation, with nations building local models, strengthening compute infrastructure, and developing export-ready AI solutions to boost competitiveness and independence.

[See inside page >](#)



 [www.ai.gov.my](http://www.ai.gov.my)

 [contactus@ai.gov.my](mailto:contactus@ai.gov.my)

## TRUST IS THE FOUNDATION OF RESPONSIBLE AI.

Malaysia has launched the MY-AI Standards platform to strengthen AI governance and responsible adoption nationwide. Led by the Ministry of Digital with NAIO and CyberSecurity Malaysia, it provides guidance and access to international AI standards for government, industry, SMEs, and academia.

[See inside page >](#)

# NATIONAL AI TREND - DRIVING AI INNOVATION

## GLOBAL TRENDS

Globally, two powerful currents are shaping the AI agenda: sovereign AI and local AI innovation. Nations are increasingly asserting control over their data, compute, and governance to reduce reliance on external providers. The European Union has advanced data residency requirements and enacted the AI Act, while Singapore has published practical toolkits to operationalise trustworthy AI.

On the model development front, countries such as the UAE (Falcon), Singapore (SEALION), India (Sarvam-AI), and Japan (NEC Cotomi) are developing domestic large language models (LLMs) in local languages to safeguard cultural identity and reduce technological dependency.



At the same time, nations are onshoring high-performance compute infrastructure to support local model development. Examples include Singapore's NSCC ASPIRE 2A/2A+, South Korea's National AI Computing Center, and the UK's AI Research Resource—comprising Isambard-AI at Bristol and Dawn at Cambridge.

Parallel to this, a global push for homegrown AI products is accelerating. From South Korea's robotics innovations to Canada's AI healthcare startups, countries are building export-ready solutions that reinforce both economic competitiveness and technological sovereignty.

# MALAYSIA'S CURRENT LANDSCAPE



Malaysia is well-positioned to advance “Made by Malaysia” AI solutions.

- **Malaysia AI:** The country has begun investing in national-scale initiatives such as the Bahasa Malaysia LLM, spearheaded by UKM with local innovators like Mesolitica. Compute and infrastructure projects led by YTL, TM, and other domestic players are expanding GPU clusters and hyperscale-ready data centers. However, Malaysia still relies heavily on global hyperscalers (AWS, Microsoft, Google, Nvidia) underlining the urgency of balancing openness with sovereignty.
- **AI Startups & Local Ecosystem:** A vibrant AI startup community is emerging, with firms tackling fintech, logistics, agriculture, and health use cases. These startups are supported by accelerators such as Selangor Twin Tech and initiatives under MDEC. Increasingly, Malaysian startups are plugging into ASEAN markets while innovating for niche, culturally relevant solutions.
- **Big Tech Support:** Major global tech companies are embedding themselves into Malaysia’s AI ecosystem. Microsoft has partnered with NAIIO and ministries to scale AI literacy and cloud services; Nvidia announced investment into sovereign compute clusters; Google and AWS are developing local cloud regions. These partnerships bring critical infrastructure, funding, and technical expertise, while also providing pathways for local talent and startups to scale.
- **Industry Momentum:** Large corporates such as Petronas, Maybank, and Khazanah-linked companies are piloting and adopting AI in predictive analytics, energy optimisation, and risk management. Universities are contributing R&D, but translating pilots into commercial, export-ready solutions remains a key challenge.

# FUTURE DIRECTION



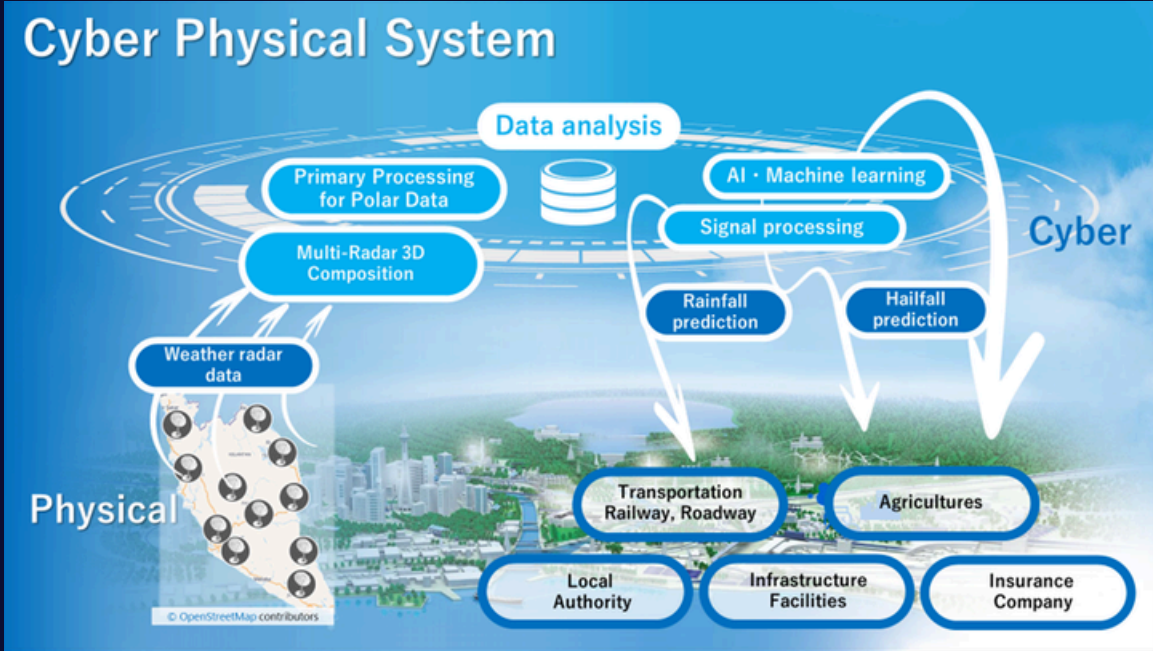
*Kuala Terengganu, Malaysia*

The National AI Action Plan 2030 positions “Made by Malaysia” AI solutions as cross-cutting enablers of Malaysia’s AI Nation aspiration:

- Establish sovereign datasets and a national supercomputing facility to ensure independence in training and deploying AI.
- Operationalise a hybrid-tiered governance model, where NAI0 coordinates nationally while sector regulators oversee domain-specific risks.
- Support startups and SMEs through AI marketplaces, export funds, and SME sandboxes to ensure local products scale regionally and globally.
- Mobilise talent schemes such as AI Fellows, Talent Investment Fund, and the 100E Program to embed top-tier AI talent directly into Malaysian industry.
- Promote Made by Malaysia AI solutions that are multilingual, culturally attuned, and relevant to ASEAN markets, while strengthening Malaysia’s positioning as a regional AI hub.

Together, sovereign AI ensures resilience and independence, while “Made by Malaysia” products project innovation outward — allowing Malaysia to compete not just as an adopter, but as a producer and exporter of trusted AI solutions.

# DRIVING AI INNOVATION: TOSHIBA AI WEATHER PREDICTION FOR SMART FARMING



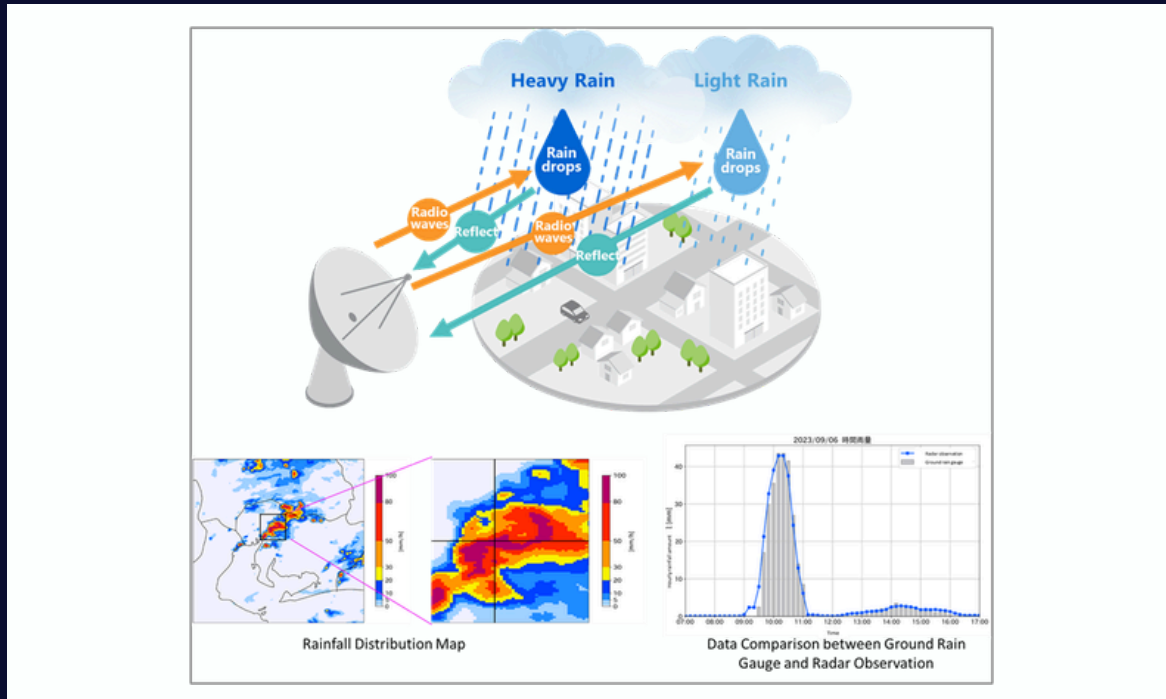
**By:**  
**MR KEN KHO**

*Toshiba is one of six key strategic partners working with Malaysia's National AI Office (NAIO) to strengthen the country's artificial intelligence ecosystem. Announced in December 2024, the collaboration supports Malaysia's broader efforts to integrate AI across government, industry and society. As part of this partnership, Toshiba Digital Solutions Corporation is working with the Muda Agricultural Development Authority (MADA) in Kedah to implement Weather Forecast AI technology under a smart farming initiative. By using specialised AI to forecast localised downpours, the project aims to improve farming efficiency, protect crops and support more informed agricultural planning.*

Over the 40 years, the global weather disasters increased 5 times and caused economic losses to 5 times too. In fact, the rainstorms in Japan have been double increased in this period.

For prevention, Toshiba is taking on the challenge of using this weather data to reduce disaster risks and realise peaceful and prosperous lives. Toshiba utilises its extensive expertise in weather data analysis, developed through years of experience in the weather radar system industry, to accurately grasp and predict the sky conditions. The company is dedicated to delivering innovative solutions that support disaster prevention and mitigation across various sectors of society. The proprietary AI, machine learning and algorithm technology uses real-time weather radar data to predict sky conditions 30 minutes ahead, with high accuracy of the rain types, intensity and amount.

# DRIVING AI INNOVATION: TOSHIBA AI WEATHER PREDICTION FOR SMART FARMING



Instead of weather radar analysis result, Toshiba performs original analysing of raw data from weather radars using own proprietary technology, to offer more accurate weather prediction in real-time.

This prediction enables disaster risk reduction by providing precise, localised 250 m<sup>2</sup> mesh rainfall data, even in areas without rain gauges. It could support multiple sectors with the following contribution cases:

- Smart Farming: Adjust dam/canal gates in advance
- Railways, Roadways: Predict and monitor rainfall in real time for safer train operations or driving
- Insurance: Provide early warnings to reduce claims and asset damage
- Navigation Apps: Offer advance detour routes in flood-prone areas
- Taxi / Ride-hailing: Allocate resources to areas expecting heavy rain and high demand
- Retail: Trigger rainy-day vouchers to drivers near their malls

## DRIVING AI INNOVATION: TOSHIBA AI WEATHER PREDICTION FOR SMART FARMING



### ONLINE PROOF OF CONCEPT (POC) PROJECT COLLABORATES WITH MADA (MUDA AGRICULTURAL DEVELOPMENT AUTHORITY)

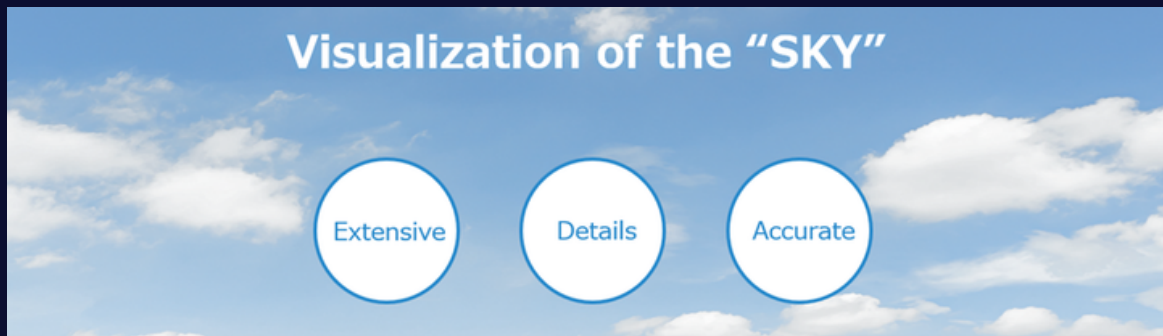
A memorandum of understanding (MoU) has been signed between Toshiba, MyDIGITAL Corp. and MADA, on exploring the use of Toshiba's advanced Weather Data Service in Malaysia's flagship smart farming initiative, "Projek Ladang Padi IR4.0".

The MoU marks a significant step in Toshiba's efforts to support climate resilience and agricultural innovation in Malaysia by leveraging its prediction technology to address the growing challenges posed by extreme weather.

With the corporation of MET Malaysia to provide the ranged weather radars data, the online PoC project is on track from November 2025, with providing 10 minutes internal rainfall prediction to the site of project. This PoC will continue until the harvesting season in April 2026. With the rainfall prediction alert, water management team will take action to mitigate the field flooding, to minimise the harm of yield.

MADA also collects rainfall data and analyses it for future potential use cases like optimising crop spraying schedules, controlling irrigation canals or others cultivation management work.

## DRIVING AI INNOVATION: TOSHIBA AI WEATHER PREDICTION FOR SMART FARMING



MADA online PoC and demonstration project is the first step to justify Toshiba AI technology could bring contribution to Malaysia, through collaboration to public and private organization. This initiative positions Toshiba as a key contributor to weather-driven digital transformation, improving safety, sustainability, and productivity in Malaysia.

Toshiba is targeting for more demonstration for other valuable use cases, with different sectors related to disaster prevention, transportation, Smart City, etc. Toshiba is working close with National AI Office (NAIO) to explore these opportunities by utilising NAIO channels and networks.

# DRIVING AI INNOVATION: WINNING THE SMART FACTORY RACE WITH AI



**By:**

**TINDARO DANZE, PRESIDENT & CEO, SIEMENS MALAYSIA**

*Siemens Malaysia Sdn Bhd is a leading technology company with comprehensive products and solutions, and emerging technologies for various markets in the Malaysian economy, under its Digital Industries and Smart Infrastructure businesses. It focuses on the areas of intelligent infrastructure for buildings, grids and distributed energy systems, more resource-efficient factories, resilient supply chains, as well as automation and digitalization in the process and manufacturing industries. The company creates technology with purpose, adding real value for customers. By combining the real and the digital worlds, Siemens empowers its customers to transform their industries and markets, helping them to transform the everyday for Malaysians.*



*Two businessmen found themselves in a jungle, face-to-face with a tiger. The first man quickly swapped his shoes for running trainers. The second man stared and asked, "Do you really think you can outrun the tiger?" The first man replied, "No—I just need to outrun you."*

That instinct—to stay ahead of the competition – captures the reality businesses face today. Markets are unpredictable. Demand can spike one month and collapse the next. Supply chains are fragile, labour costs are rising, and competitors are moving faster. In this environment, companies that fail to adopt new technologies risk falling behind.

# DRIVING AI INNOVATION: WINNING THE SMART FACTORY RACE WITH AI

## INDUSTRIAL AI: THE HIDDEN BACKBONE

It is no surprise, then, that AI has become a central topic— from the consumers browsing their smartphones sitting in cafés to the boardroom of corporate enterprises planning their next strategic steps. The questions are familiar: Can it be trusted? Is it sustainable? Will it replace us? Who is leading the AI race?

These concerns are valid, but they often rest on a misconception that AI is a single, uniform force. In fact, AI is evolving in layers – each with its own role, risks and impact. Understanding these layers is key to seeing where real competitive advantage lies.

Most people meet AI through everyday tools—chatbots, email assistants, or image generators. Errors are typically minor and easily corrected, which makes consumer AI highly visible and widely discussed.

Far less visible—but far more consequential—is Industrial AI. It powers factories, logistics hubs, and energy systems, where the margin for error is extremely small. Unlike Consumer AI, a single wrong prediction here can halt production, waste materials or even compromise safety.

This distinction becomes clearer in real-world operations. In a semiconductor plant operating near full capacity, an undetected machine fault can trigger hours of downtime and missed delivery targets. In chemical processing or energy systems, the consequences multiply. For these environments, Industrial AI must not only be precise but also reliable and explainable—any compromise can ripple across entire supply chains.

Industrial AI drives predictive maintenance, quality analytics, and process optimisation—capabilities essential for sustaining operational performance. Its full potential, however, is unlocked when integrated with technologies such as digital twins, advanced robotics, and software-defined automation. This convergence allows companies to move beyond incremental gains toward genuine transformation.

As a result, Industrial AI forms the backbone of modern industry, enhancing efficiency, sustainability, and resilience while providing early adopters with a decisive strategic advantage.

# DRIVING AI INNOVATION: WINNING THE SMART FACTORY RACE WITH AI



## INDUSTRIAL AI IN ACTION: THE WATER INDUSTRY

To see how this plays out in practice, the Malaysian water industry provides a clear example. Utilities face high energy costs, ageing infrastructure, and significant water losses. National non-revenue water (NRW) levels remain high at around 34.3% in 2026, resulting in the loss of approximately 6,000 million litres of treated water per day and nearly RM2 billion in annual financial losses.

Energy is also a significant cost component in Malaysian water supply systems, typically accounting for around 10–30% of operating expenditure, but potentially exceeding 40% in pumping-intensive or energy-intensive networks.

Here, Industrial AI moves from concept to impact. Powered by sensors and data analytics, it detects leaks quickly, reduces water losses by up to 50%, optimises pumping schedules, and improves energy efficiency. Self-learning systems can monitor entire networks, identify inefficiencies, and integrate with renewable energy to cut costs further.

This illustrates a broader point: organisations that adopt Industrial AI early do not just improve operations—they differentiate themselves, gaining both efficiency and market credibility.

# DRIVING AI INNOVATION: WINNING THE SMART FACTORY RACE WITH AI



## THE RISE OF AGENTIC AI

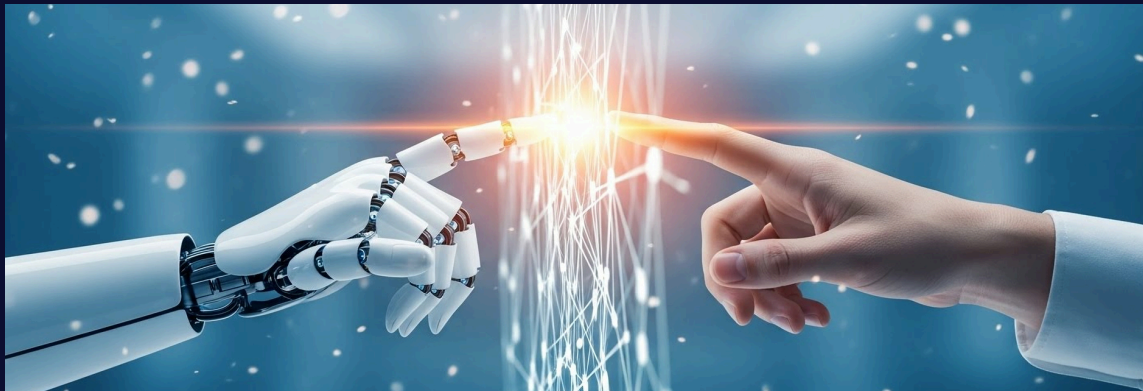
Once this operational foundation is in place, the next layer of AI begins to emerge. Agentic AI takes Industrial AI a step further by moving from insight to autonomous action.

Instead of handling one task at a time, it is given a goal—monitoring a system, fixing an issue, or managing a workflow—and completes multi-step tasks with minimal supervision. For example, imagine a factory machine shows a fault—a warning light isn't working properly. Rather than checking multiple systems, an engineer asks an AI assistant for help in plain language.

Building on Industrial AI's data access, the system looks up past maintenance records, checks machine settings, identifies issues, and suggests a fix. After the engineer approves it, the AI executes the fix, updates records, and shares a summary. What once required multiple steps becomes a single, streamlined process.

In this way, Industrial AI and Agentic AI work together—one providing insight, the other driving action. Looking ahead, AI systems may collaborate on even more complex tasks, while humans continue to oversee and guide operations.

# DRIVING AI INNOVATION: WINNING THE SMART FACTORY RACE WITH AI



## PHYSICAL AI: INTELLIGENCE IN ACTION

The next phase is bringing this intelligence into the physical world. Physical AI embeds decision-making directly into machines that interact with real environments.

In production, robotic arms equipped with AI-powered sensors can adjust to variations in materials or positioning, improving efficiency and reducing errors. In warehouses, autonomous vehicles and mobile robots can reroute dynamically to avoid congestion and optimise flow. In energy and utility systems, AI-enabled sensors and actuators help respond to fluctuations in demand or equipment performance.

Unlike traditional automation, Physical AI combines sensing, decision-making, and actuation, allowing machines to act in near real time. While not fully autonomous in all contexts, these systems can reduce downtime, improve operational flexibility, and enhance safety in advanced industrial deployments.

## THE AI LAYERS AND THEIR IMPACT

Seen together, these layers form a progression—from visibility to operational impact to autonomous action:

- Consumer AI: Captures attention in everyday life
- Industrial AI: Drives efficiency, reliability, and economic impact
- Agentic AI: Automates complex workflows
- Physical AI: Embeds intelligence into real-world systems

# DRIVING AI INNOVATION: WINNING THE SMART FACTORY RACE WITH AI

Understanding this progression clarifies that AI is not a single force but an evolving capability that combines the real and digital worlds. Its development varies across industries, shifting from a supportive interface to a decision-making force embedded in operational systems.

Despite AI's power, humans remain indispensable:

- To train AI models with accurate data and domain expertise
- To supervise AI in safety- and quality-critical environments
- To continuously refine AI decisions using judgement and operational knowledge

When used as a collaborator rather than a replacement, AI amplifies human capability and transforms digital transformation into a true competitive advantage.



## THE DATA DELUGE INSIDE MODERN FACTORIES

This shift toward AI-driven operations is also generating a new challenge: Data Deluge.

Modern manufacturing is now defined by sensors, automation, and digital monitoring, with production lines tracking thousands of variables in real time.

However, as AI adoption grows, so does the volume of data. In many organisations, this information remains scattered across systems, spreadsheets, and databases—creating a gap between data availability and actionable insight.

The result is an abundance of data, but a shortage of usable intelligence. Bridging this gap is the next critical step in remaining competitive.

## DRIVING AI INNOVATION: WINNING THE SMART FACTORY RACE WITH AI



### BRIDGING FACTORY SYSTEMS AND DATA SCIENCE

Addressing this challenge requires bringing analytics closer to operations. Platforms like Siemens (Altair) RapidMiner do exactly this by combining data preparation, predictive analytics, and deployment in a single environment.

This allows engineers—not just data scientists—to build predictive workflows using operational data. Maintenance models detect early warning signals, quality analytics reveal defects, and process optimisation uncovers inefficiencies.

In this context, even small improvements can deliver significant savings—further reinforcing the advantage of early adoption.

### MALAYSIA'S MANUFACTURING OPPORTUNITY

At a national level, these trends create a significant opportunity. Malaysia's manufacturing sector is a key economic driver, deeply integrated into global supply chains.

With total Malaysian manufacturing sales reaching RM1.97 trillion in 2025 and continued growth into 2026, the sector is already strong. But its future competitiveness will increasingly depend on how effectively it adopts digital and AI-driven capabilities.

## DRIVING AI INNOVATION: WINNING THE SMART FACTORY RACE WITH AI

Through initiatives like the New Industrial Master Plan 2030, Malaysia is actively encouraging this shift. AI and advanced analytics will play a central role in enabling manufacturers to move up the value chain, strengthen resilience, and compete globally.

In an industry of this scale, solving the factory floor's data challenges represents a strategic opportunity for the nation.



### CONCLUSION: HARNESSING AI FOR INDUSTRIAL ADVANTAGE

Taken together, the message is clear: Industrial AI forms the foundation, Agentic AI extends automated decision-making, and Physical AI brings digital-world intelligence into real-world action. Early adopters gain measurable advantages in efficiency, reliability, cost control, and sustainability.

Yet technology alone is not enough. Human expertise remains essential to ensure these capabilities are applied responsibly, effectively, and sustainably.

For Malaysia, this is both a productivity opportunity and a strategic imperative. The companies that succeed will be those that integrate technology, data, sustainability, and human judgement into a cohesive whole.

And like the two men facing the tiger, success will not depend on perfection—but on staying ahead of the competition. Time to put on our “AI” trainers!

# DRIVING AI INNOVATION: FROM ACCESS TO ADOPTION: ONE YEAR OF DEMOCRATISING AI IN MALAYSIA



**By:**  
**PEPPER LABS**

*Artificial Intelligence is reshaping economies, governance and the future of work. Yet progress is not measured solely by technological sophistication, it is measured by how widely and responsibly AI capability is distributed.*

*Over the past year, Pepper Labs, a Malaysian-grown social enterprise focused on digital entrepreneurship and employability, has undertaken a structured effort to democratise AI. The objective has been simple but ambitious: ensure AI adoption extends beyond specialist teams and large corporations to Malaysian of all walks of life.*

## **A PEOPLE-FIRST APPROACH**

Democratising AI begins with access, but it must lead to agency.

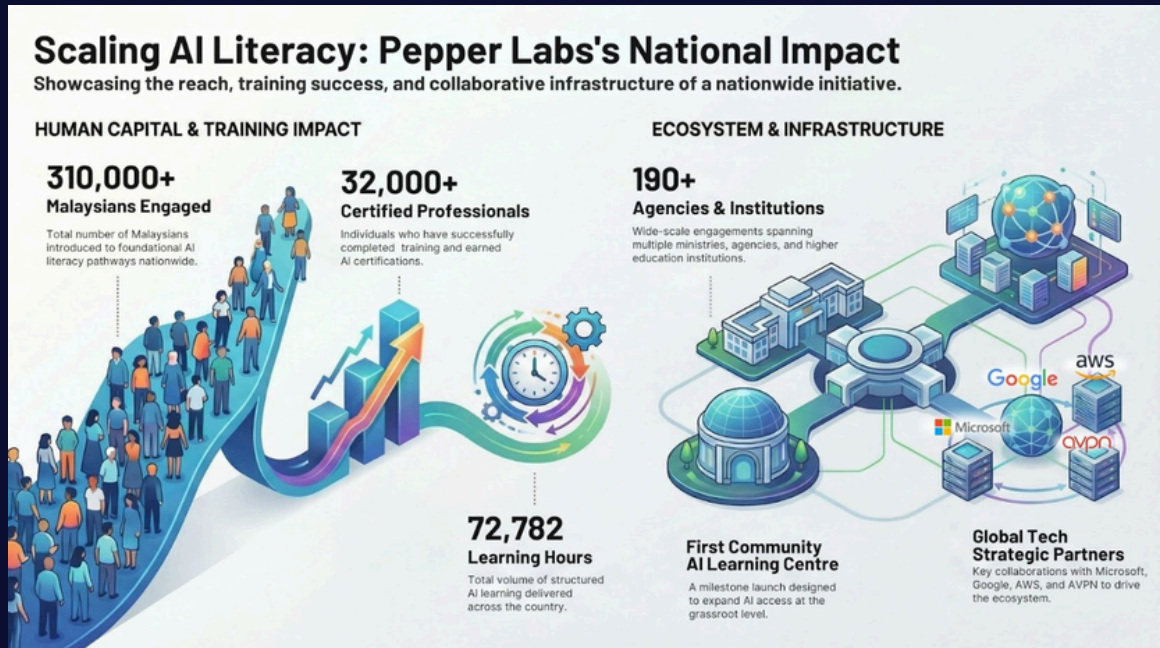
Our implementation model moves beyond awareness campaigns. It integrates structured literacy pathways, certification tracks, accelerator-style workshops and guided experimentation. Participants are supported to redesign workflows, automate repetitive processes and apply AI within real operational contexts: whether in public administration, higher education or enterprise environments.

This applied approach ensures that AI capability translates into measurable productivity gains and service improvements.

# DRIVING AI INNOVATION: FROM ACCESS TO ADOPTION: ONE YEAR OF DEMOCRATISING AI IN MALAYSIA

## NATIONAL IMPACT AT SCALE

Within twelve months, Pepper Labs' AI initiatives, delivered in collaboration with ecosystem partners, have contributed to large-scale engagement across Malaysia:



Collectively, these initiatives represent a progression from awareness to applied capability, strengthening confidence, competency and institutional readiness across sectors.

## GLOBAL PARTNERS, LOCAL IMPLEMENTATION

Pepper Labs' democratisation journey is strengthened through collaboration with global technology leaders and regional ecosystem partners including Microsoft, Google.org, Amazon Web Services (AWS) and Asian Venture Philanthropy Network (AVPN).

These partnerships ensure Malaysian participants receive exposure to globally benchmarked tools and practices, contextualised to national governance frameworks and operational realities.

# DRIVING AI INNOVATION: FROM ACCESS TO ADOPTION: ONE YEAR OF DEMOCRATISING AI IN MALAYSIA

## LESSONS FROM THE GROUND

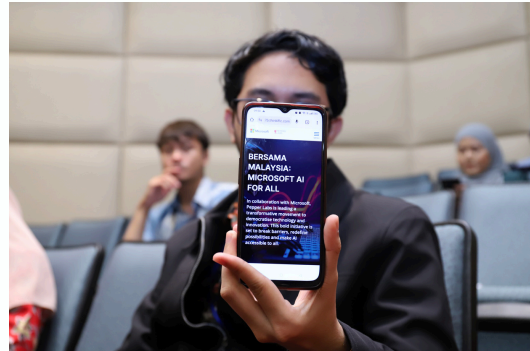
One year of implementation has surfaced three important insights.

**First**, AI literacy must evolve into utilisation. Sustainable impact occurs when individuals embed AI into daily workflows, rather than treat it as a standalone tool.

**Second**, leadership alignment accelerates adoption. Institutions that provide clear guidance on responsible experimentation move more confidently from pilot to operational integration.

**Third**, governance builds trust. Integrating discussions on data protection, accountability and responsible AI use strengthens institutional confidence and public legitimacy.

AI readiness is therefore not merely technical: it is organisational and cultural.



## THE ROAD AHEAD

Malaysia's aspiration to become an AI Nation requires inclusive participation across public, private and community sectors. Democratising AI is not a one-off programme; it is an ongoing capability-building movement.

The next phase will focus on deepening accelerator-style programmes, expanding community access points and supporting practical AI solutioning within agencies and enterprises. The emphasis will remain on responsible deployment, measurable productivity gains and inclusive opportunity.

The shift from access to agency has begun. Sustaining it will require continued collaboration, shared learning and whole-of-nation commitment.

# NAIO UPDATES



## TRUST IS THE FOUNDATION OF RESPONSIBLE AI

Malaysia marked an important milestone with the launch of the MY-AI Standards platform, a national initiative aimed at strengthening governance and the responsible implementation of artificial intelligence across the country.

Officiated by YB Gobind Singh Deo, Minister of Digital, the initiative reflects Malaysia’s commitment to building a trusted AI ecosystem that supports innovation while ensuring the benefits of AI reach businesses, organisations and the rakyat.

MY-AI Standards serves as a national digital platform that provides guidance, resources and references to international AI standards. It supports organisations across the public sector, industry, SMEs and academia in understanding and implementing AI standards in a more systematic and practical manner.

The initiative is implemented through collaboration between the National AI Office (NAIO) and CyberSecurity Malaysia, in strengthening the national standards ecosystem and adoption of international AI standards.

For more information on MY-AI Standards: [Trust is the foundation of responsible AI.](#)

# NAIO UPDATES

**NIAGA AWANI**

**THE ROLE OF STANDARDS IN MALAYSIA'S AI FUTURE**

**CINDY PAROKKIL**  
AI Policy Lead,  
International Organization for  
Standardization (ISO)

**DARMAIN SEGARAN**  
Policy Manager,  
National AI Office (NAIO)

**FRIDAY • 13 MARCH 2026 • 9:30 AM**  
Watch it on **CH 501** | Live TV - [astroawani.com](http://astroawani.com) & Astro AWANI App

astro GO astro AWANI

## HOW DO STANDARDS SHAPE THE FUTURE OF ARTIFICIAL INTELLIGENCE?

As Malaysia advances its ambitions under AI Nation 2030, the role of standards becomes increasingly important in ensuring AI is developed and deployed responsibly, safely and with trust.

Watch Darmain Segaran, Policy Manager at the National AI Office, as he joins Cindy Parokkil, AI Policy Lead at the International Organization for Standardization (ISO), on Niaga AWANI, Astro AWANI to discuss the role of standards in shaping Malaysia's AI future.

Watch the full segment coverage on: [The Role of Standards in Malaysia's AI Future](#)

# NAIO UPDATES



## MALAYSIA'S AI ADOPTION: WHERE ARE WE — AND WHERE NEXT?

At dataAIX Kuala Lumpur 2026, Sam Majid, Head of the National AI Office (NAIO), challenged a common assumption: AI adoption alone is not enough. The real question is whether we are creating value — or simply consuming technology built elsewhere.

Malaysia's next phase is clear. Under AI Nation 2030, the focus shifts from usage to creation — building Made by Malaysia solutions that reflect our realities and can scale across ASEAN. Competitiveness will not be defined by how fast we adopt AI, but by how meaningfully we create, adapt, and scale it.

As a nation, we see three areas that require collective attention:

Capability — building not just technical skills, but the ability to translate AI into real-world impact.

Clarity — strengthening guidance on responsible use, especially where data and trust are involved.

Continuity — moving from experimentation to sustained, scalable implementation.

Read more for the full context: [Malaysia's AI Adoption: Where Are We — and Where Next?](#)

# NAIO UPDATES



## MALAYSIA BEGINS NATIONWIDE ROLLOUT OF AI-POWERED FARMING TOOL, RAKAN TANI

Malaysia is rolling out Rakan Tani, a homegrown AI co-pilot that delivers real-time, personalised farming advice to padi farmers via WhatsApp.

Developed through a collaboration between the Ministry of Digital Malaysia, Ministry of Agriculture and Food Security Malaysia, National AI Office (NAIO), PADIBERAS NASIONAL BERHAD, and Global AI Village, the platform helps farmers make better decisions on fertilisation, irrigation, and pest management using real-time data.

Following a successful pilot, the initiative will be scaled nationwide—supporting farmers with practical AI solutions to improve productivity and strengthen food security.

Read more: [Malaysia Begins Nationwide Rollout Of AI-Powered Farming Tool, Rakan Tani](#)

# NAIO UPDATES



## INDIA AI IMPACT SUMMIT 2026 – MINISTERIAL PANEL SPOTLIGHT

YB Gobind Singh Deo recently represented Malaysia at the India AI Impact Summit 2026 during the Ministerial Panel on “International AI Safety Coordination: What Policymakers Need to Know.”

He highlighted Malaysia’s digital milestones, including the establishment of the National AI Office (NAIO) and the National Guidelines on Artificial Intelligence Governance and Ethics (AIGE), pivotal steps that continue to advance the nation’s AI ecosystem.

At the same time, YB Gobind reminded the audience that rapid technological advancement brings new challenges. He spoke on the importance of ensuring safe and responsible AI deployment and underlined the “ASEAN Gap”, recognising that regional neighbours are at different stages of AI development, and one-size-fits-all solutions are not feasible.

He emphasised that AI training for public officials is a long-term national asset and advocated a modular ASEAN framework that balances shared goals with differing starting points, fostering collaboration and regional progress.

Malaysia remains committed to driving responsible, ethical, and forward-looking AI policies on the global stage.

# NAIO UPDATES

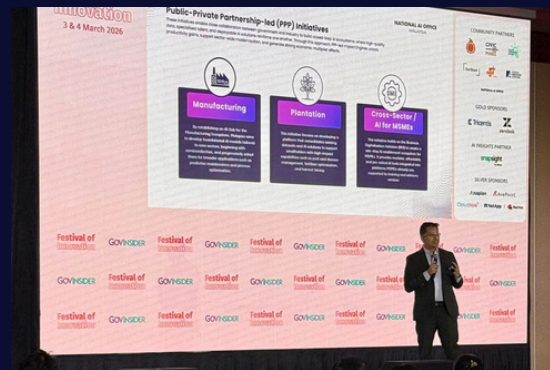
## SHAPING THE FUTURE OF GOVERNMENT: COLLABORATION, INNOVATION & CITIZEN IMPACT

At the Festival of Innovation 2026, organised by GovInsider, the National AI Office (NAIO), Malaysia highlighted how public-private collaboration is driving the nation's digital transformation. On 3 March, Sam Majid, Head of the National AI Office, delivered a forward-looking presentation on how joint AI innovation labs, secure cloud sandboxes, shared data platforms, and co-created digital solutions can scale nationally, advancing AI Nation 2030 and positioning Malaysia as an AI-driven economy that delivers inclusive, responsible, and sustainable impact.

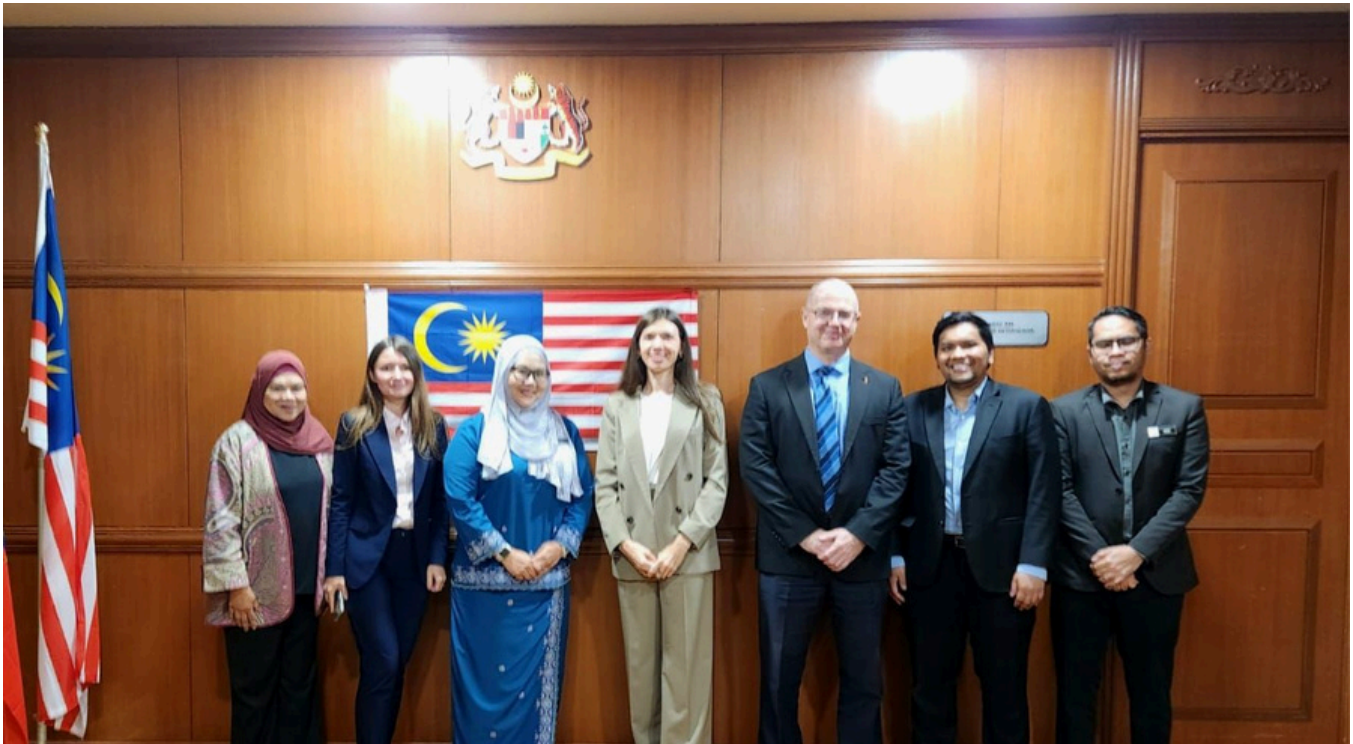
On 4 March, during the Opening Panel Session: Co-Creating the Social Contract, moderated by Shawn Ten, an alumnus of the Obama Foundation Leaders Asia-Pacific program, Sam Majid joined thought leaders to discuss how upskilling in adaptive leadership, systems thinking, and behavioural design empowers public officers to dismantle invisible barriers and deliver citizen-centric outcomes.

These sessions demonstrate that building a future-ready public service is about people, partnerships, and purpose, not just technology.

In addition, NAIO was shortlisted for 3 awards — the Inter-Agency Award, Digital Government Award, and Transformative Agency of the Year Award, and received the Special Mention AI-Ready Award alongside Jabatan Digital Negara (JDN), highlighting its leadership in advancing AI innovation for public service.



# NAIO UPDATES



## MALAYSIA AND RUSSIA EXCHANGE PERSPECTIVES ON AI DEVELOPMENT

The National AI Office (NAIO), together with the International Division of the Ministry of Digital Malaysia, recently held a preliminary engagement with officials from the Embassy of the Russian Federation in Malaysia. The introductory meeting served as a valuable platform to exchange perspectives on our respective AI progress and strategic priorities.

NAIO was led by Alhafidz Yahya, Director of Innovation, who briefly shared Malaysia's aspirations toward becoming an AI Nation by 2030, designed to drive responsible, inclusive, and high-value AI adoption.

The discussion also provided useful insights into Russia's AI direction, including its emphasis on rapid AI integration into the economy, continued investment in research centres, and workforce development to accelerate adoption across key sectors.

The engagement highlighted opportunities to further explore cooperation, particularly in areas of AI research, talent development, and knowledge exchange, underscoring the growing importance of international collaboration in shaping trusted and impactful AI ecosystems.

# NAIO UPDATES



## NAIO HIGHLIGHTS MALAYSIA'S AI NATION 2030 VISION AT FORUM EKONOMI MALAYSIA (FEM) 2026

The National AI Office (NAIO) was honoured to be invited by the Ministry of Economy to participate in the Malaysia Economic Forum (FEM 2026) yesterday, contributing to discussions on Malaysia's journey towards becoming an AI Nation.

In the panel session “Progressing towards an AI Nation”, Sam Majid, Head of NAIO, shared insights on Malaysia’s ambition for an inclusive, responsible, and sustainable AI future by 2030. The discussion spotlighted AI Nation 2030 (National AI Action Plan 2026–2030), addressing key pillars such as strategy, talent, digital infrastructure, ethical AI practices, and investment initiatives to build a trusted and globally competitive AI ecosystem.

In addition, NAIO was part of the FEM showcase, engaging with stakeholders and sharing ongoing initiatives that support responsible, inclusive, and impactful AI adoption as Malaysia progresses towards becoming an AI Nation. We look forward to continued collaboration with partners across government, industry, and the region as we collectively shape Malaysia’s AI-powered future.

For more context on the discussions: [Malaysia Economic Forum \(FEM 2026\)](#)

# NAIO UPDATES

## POWERING PUBLIC SERVICE THROUGH PEOPLE + AI

Technology is only as effective as the people who guide it. While AI offers significant potential, real impact happens when public officials are equipped with the knowledge and confidence to harness it responsibly.

Through upskilling initiatives such as the NAIO-AWS AI Academy held on 12 February 2026, we are ensuring civil servants are not just observers of the digital age, but active architects of it.

**Why AI Capability Development Matters?** Through the programme, public officials gained practical AI literacy and participated in an experiential policy lab, translating national ambition into real-world understanding.

**For the Rakyat:** Better service delivery. When officials understand AI, they can design smarter applications, faster response systems and more responsive citizen support.

**For Businesses:** A more agile regulatory environment. AI-ready institutions can implement automated permits and smarter compliance processes, reducing delays that often hinder commerce.

**For the Nation:** Future-ready governance. By strengthening internal expertise, public services are built on innovation, transparency and a clear understanding of modern digital demands.

**The Goal:** Empowering a public workforce that harnesses AI responsibly to bridge gaps, ensuring every interaction with government services is backed by trust, efficiency and innovation that supports economic growth.



# Call for contributors

NAIO is looking for writers to contribute to the conversation on AI through this publication.

Authors who are interested in submitting an article for the NAIO Pulse should send a title and short summary to the "Editorial Office" (contact [us@ai.gov.my](mailto:us@ai.gov.my)) outlining the scope of their proposed article and accompanied by a short profile of the writer.

Accepted proposals will be notified *via* email with submission guidelines attached. Topics should be within the scope of the NAIO Pulse's coverage and address current issues.



Thank you for being a valued part of the NAIO Community. If you have any question or feedback, please do not hesitate to reach out to ([contactus@ai.gov.my](mailto:contactus@ai.gov.my))

---

## DISCLAIMER

The content of this newsletter is provided for general information and discussion purposes only. The views, opinions, analyses, and any other material expressed herein do not represent the official policy, position, or endorsement of the National AI Office (NAIO), the Ministry of Digital, or any other arm of the Government of Malaysia. Nothing in this publication should be construed as professional advice or relied upon as definitive guidance for decision-making. While every effort is made to ensure accuracy and currency, NAIO makes no warranties, either express or implied, regarding the completeness, reliability, or suitability of the information contained herein. Readers are encouraged to verify facts independently and to consult appropriate experts where necessary. Neither NAIO nor the Ministry accepts any liability for any loss or damage arising from the use of, or reliance on, the information in this newsletter. Generative AI was used in the preparation of parts of this publication.